

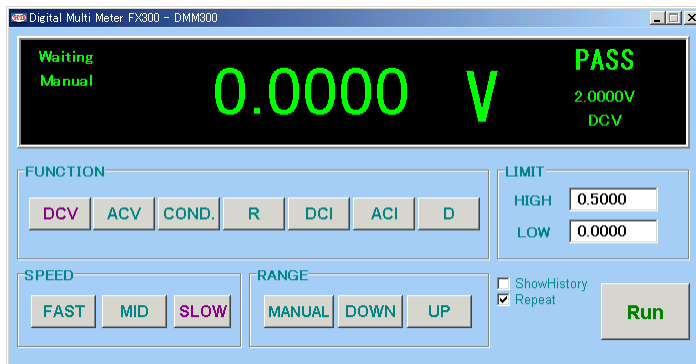
**Features**



- Best for use in production lines
- Measurement com is isolated with digital ground of power supply, COM ports, USB
- DC voltage, AC voltage, DC Current, AC Current, Resistance, Diode test, etc.
- Sampling speed can be set to 3 different levels
- Use as test controller



Use the attached application tool FxAutoTest.exe to edit test program, and write it to the module, which use the FX300 and FX600/620 as a test step. Select a test program, and run it from external IOs.



*From the FX300 AutoTest, it is also possible to control the FX600/620 relay module (Option).*

**Operation Panel**

**Specification**

Measured DC Voltage	4 ranges (200mV, 2V, 20V, 200V)
Measured AC Voltage	4 ranges (200mV, 2V, 20V, 300V) (Measured frequency range 40Hz-20KHz)
Measured DC Current	4 ranges (20mA, 200mA, 2A, 10A)
Measured AC Current	4 ranges (20mA, 200mA, 2A, 10A) (Frequency range 40Hz-3KHz)
Measured Resistance	6 ranges (200Ω, 2KΩ, 20KΩ, 200KΩ, 2MΩ, 20MΩ)
Conduction test, Diode test	
Display	3 1/2 digits, 2000 count display 4 1/2 digits, 20000 count display
Measuring sampling rate	
FAST	≈ 35 samples/sec; Integral time ≈ 3ms
MEDIUM	≈ 12 samples/sec; Integral time ≈ 20ms(50Hz), 16.7ms(60Hz)
SLOW	≈ 3 samples/sec; Integral time ≈ 80ms(50Hz), 66.7ms(60Hz)
Range mode	Manual range / Auto range